

# SafTGlo



**// YOUR GUIDE  
TO THE MARKET  
LEADING  
PHOTOLUMINESCENT  
SOLUTION FOR  
EVERY PART OF  
YOUR AIRCRAFT //**



## // BETTER BY DESIGN //

A completely sealed system...colour and pattern matching.....reduced weight.....payback within 12 months. We take your feedback on board to make sure SafTGlo does everything you want.



Regional Jet



B757

## // SOLUTIONS FOR EVERY PART OF YOUR INTERIOR //

Our complete range of systems (floorpath marking and signs) has been designed for the particular requirements of each part of your interior – from single-aisle, single class configurations to complex multi-class wide-body cabin interiors.



Exit marking

## // REDUCED INSTALLATION COSTS AND WEIGHT //

The unique 'HingedWing®' design on our ColorMatch OC grips carpet edges for a seamless fit – meaning you don't have the additional cost of binding carpet edges. And SafTGlo is lighter than the electrical systems it replaces.



Boeing Sky interior

## // AVAILABLE IN UP TO 300 COLOURS //

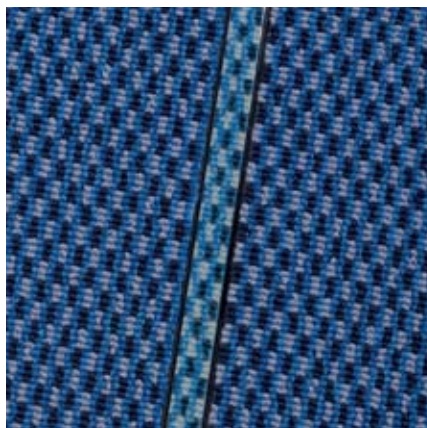
Our design engineers use digital spectography to find the perfect match for your interior decor; and we can even match the pattern on your carpet



First Class

## // THE WORLD'S FAVOURITE PL SYSTEM //

Our proven, patented technology is already in use in over 7,000 aircraft worldwide and is certified for over 80 aircraft types through our FAA and EASA STCs.



PatternMatch

## // RELIABILITY AND RETURN ON INVESTMENT //

With 100% reliability (if it's there it works) SafTGlo more than pays for itself in less than a year. And reduction of costly flight delays means even more savings.

# SafTGlo

STG Aerospace has a programme of continuous product improvement that keeps our unique photoluminescent (PL) system at the forefront of the industry. Since 1995, the SafTGlo patented systems have led the way in floorpath emergency lighting for aircraft. They offer an easy to install, low-cost low-weight alternative to electrical floorpath systems. With over 7,000 aircraft fitted worldwide, SafTGlo is a proven technology that reduces costs for OEMs and airline operators.

SafTGlo technology is used by every OEM, including world leaders Boeing and Embraer. Our systems store and simultaneously emit light, giving highly visible emergency exit guidance for up to 16 hours in darkness after a short period of charging with normal cabin lighting. And with no bulbs, batteries or wires, SafTGlo is 100% reliable.

### The SafTGlo ColorMatch Package.

SafTGlo is a completely sealed PL floorpath marking system that's hard wearing, long lasting and low maintenance. With SafTGlo ColorMatch you can tailor the colour of your floorpath marking to your cabin interior. Our design engineers use a digital spectrum analyser to create a colour option that complements your cabin décor – and your corporate branding – without compromising on safety. With a choice of up to 300 colours the only time you'll notice the new SafTGlo ColorMatch is when it's needed.

And our new PatternMatch service means we can match the actual pattern of even the most intricate carpet design. A translucent overlay, specially printed to match the surrounding carpet's colour and design, sits over the PL strip meaning the system is completely discreet when cabin lighting is on but just as effective as other SafTGlo variants if the lights go out.

ColorMatch OC incorporates a durable polycarbonate moulding into which the ColorMatch PL strip is simply 'clipped to fit'. Because the strip can be unclipped and reversed, the system simplifies installation and refurbishment; and the 'HingedWing®' design makes carpet fitting easier by gripping the carpet once the ColorMatch strip is clipped in place, saving the time and cost of binding the carpet edges.

As pioneers, specialists and market leaders in the field of PL in aviation, we also offer the highest standard of sales and support service. You can be sure of prompt delivery and the expertise of our technical staff who are always on hand to help. Our design team can help you create the perfect PL solution for your aircraft.

#### Call us on:

+1 (305) 828 9811 (Americas) or  
+44 (0) 1760 723 232 (Rest of World) or  
find out more at [www.stgaerospace.com](http://www.stgaerospace.com)

[www.stgaerospace.com](http://www.stgaerospace.com)

## The SafTGlo ColorMatch Package

### No bulbs, no batteries and no wires.

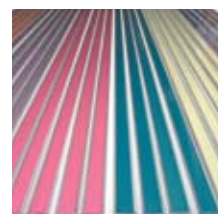
100% reliability means fewer costly flight delays.



### Certified for over 80 different aircraft types through our FAA and EASA STCs.



### Up to 300 colours to blend with the design of your cabin interior and corporate branding.



### Tailored solutions for every part of your aircraft from galley areas to photoluminescent signs.



### Reduced installation costs with carpet edges clipping seamlessly into the OC housing.

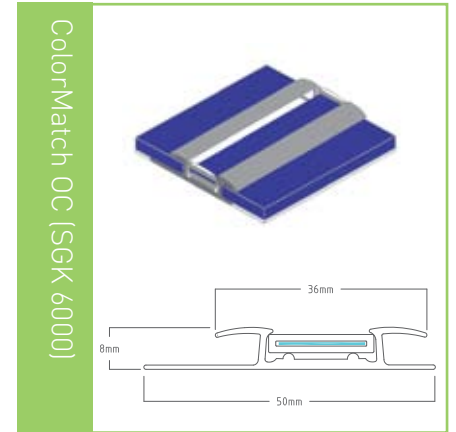
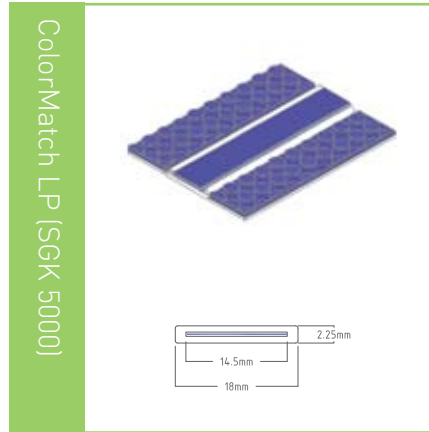
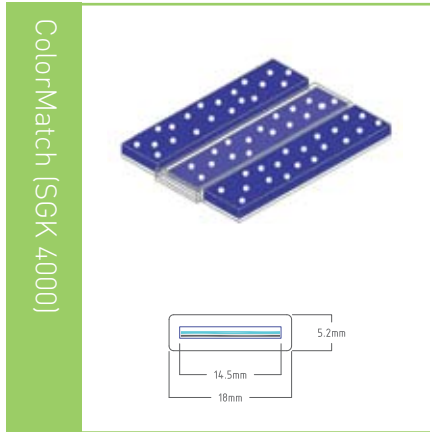


### SuperSeal™ technology gives unrivalled performance and a lighter and brighter design than any competing system. Used for all new ColorMatch variants, this patented system is only available from STG.



# The SafTGlo ColorMatch Product Range

Please call us for specific part numbers relating to your aircraft



## ColorMatch

- Completely sealed PL footpath marking system
- Only 18mm wide – narrower than other systems
- Brighter than other systems
- Up to 300 colour options including PatternMatch variant
- Robust and reliable design
- Scratch-resistant coating
- Exclusive patented design
- 100g/m

## ColorMatch LP (Low Profile)

- Same ColorMatch performance and colour options
- Specially designed for use with gallery and non-textile flooring
- Only 2.25mm deep – sits flush in flooring
- Hard-wearing, reliable design
- Exclusive patented design
- 48g/m

## ColorMatch OC (Over Carpet)

- Two piece system
- Unique 'HingedWing®' design grips and hides carpet edge
- Innovative 'ClipFit®' design distributes stresses to prevent cracking
- Reversible track offers 'no-spares' solution to refurbishment
- Patents pending

|                            |   |
|----------------------------|---|
| <b>FAA/EASA</b>            | FAA & EASA approved for around 70 aircraft models.  |
| <b>Power requirements</b>  | Non-electrical, self-powered system, charged by ambient lighting.   |
| <b>Charging time</b>       | 5 to 45 minutes, depending on aircraft type and customer requirements.*   |
| <b>Performance</b>         | Up to 14 hours approved dark duration.*   |
| <b>Flammability</b>        | Conforms to FAR/CS 25.853(a) appendix F part I, 60s. vertical burn.   |
| <b>Durability</b>          | Surpasses 20,000 cycle, 300lbs severe loading galley cart test.   |
| <b>Toxicity</b>            | Non-toxic, BSS7239, ATS1000/ABD0031.  |
| <b>Radioactivity</b>       | Non-radioactive.  |
| <b>Cleaning</b>            | Warm water and soap or mild detergents recommended.   |
| <b>RTCA approval</b>       | All products approved to RTCA DO 160D/E.  |
| <b>Storage temperature</b> | -55°C to +80°C. <b>Operation temperature</b> -25°C to +80°C.  |
| <b>UV stability</b>        | MIL STD 810F.   |
| <b>Fluids resistance</b>   | Resistant to a wide range of drinks and cleaning fluids. <b>Fungus resistance</b> Fully resistant (non-nutrient materials). |

\* Please call STG Aerospace regarding your particular requirements

FIND OUT MORE BY VISITING  
[www.stgaerospace.com](http://www.stgaerospace.com)

OR CALL IAN McCUTCHEON ON  
+44 (0)1760 723232  
OR CALL DOUG NOWINSKI ON  
+1 (305) 828-9811

STG AEROSPACE  
ECOTECH BUSINESS PARK  
SWAFFAM  
NORFOLK PE37 7XD, UK

E: [info@stgaerospace.com](mailto:info@stgaerospace.com)  
T: +44 (0)1760 723232  
F: +44 (0)1760 723323

STG AEROSPACE, INC.  
6043 N.W. 167TH STREET  
SUITE A-14  
MIAMI, FLORIDA 33015, USA

E: [info@stgaero.com](mailto:info@stgaero.com)  
T: +1 (305) 828-9811  
F: +1 (305) 828-2939